



How to manage Browser Settings for Single Sign On

Internet Explorer (8.0, 9.0, 10.0)

Enable Single Sign On (SSO)

1. In Internet Explorer (You might have to hit the Alt key to see the menu), please go to the Tools -> Internet Options -> Security tab -> Local intranet -> Sites -> Advanced button and enter in 'https://federation.sysadm.suny.edu' within the 'Add this website to the zone' field, choose 'Add', 'close', 'ok', 'ok'. Go to the webpage you want to set as your home page.

See end of this document for instructions graphics.

Mozilla Fire Fox

Enable Single Sign On (SSO)

To enable single sign-on in Firefox, you must authorize the SUNY SA Intranet site for automatic NTLM. To do this:

1. Open **Firefox**.
2. Enter about:config in the address bar of Firefox and press **Enter**.
3. In the **Filter** textbox, enter network.automatic-ntlm-auth.trusted-uris and press **Enter**.
4. Double click on network.automatic-ntlm-auth.trusted-uris to edit it.
5. Enter 'https://blue.suny.edu' and click **OK**.

If you set this setting in your browser, you will not be able to use the "Change User" feature in SUNYBlue

See end of this document for instructions graphics.



The State University
of New York

Google Chrome

Single Sign On (SSO) - Must set up SSO in Internet Explorer. Google Chrome uses the IE settings.

Apple Safari

Mac's may not be compatible for Single Sign On Process. Your VPN may not be recognizable.

**For System Administration – VPN Instructions please visit:
<http://www.suny.edu/VPN/>**

Apple iPad

Single Sign On (SSO):

**For System Administration – VPN Instructions please visit:
<http://www.suny.edu/VPN/>**

For VPN access you can't be on a wired connection on our LAN.

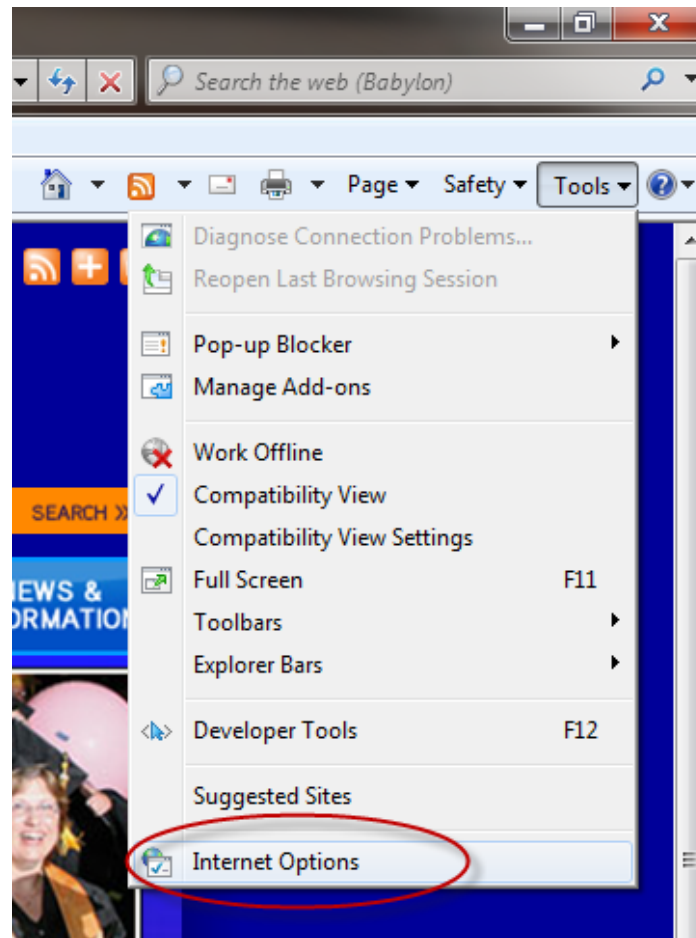


The State University
of New York

Graphical Instructions to Enable Single Sign On (SSO)

Internet Explorer (8.0, 9.0, 10.0)

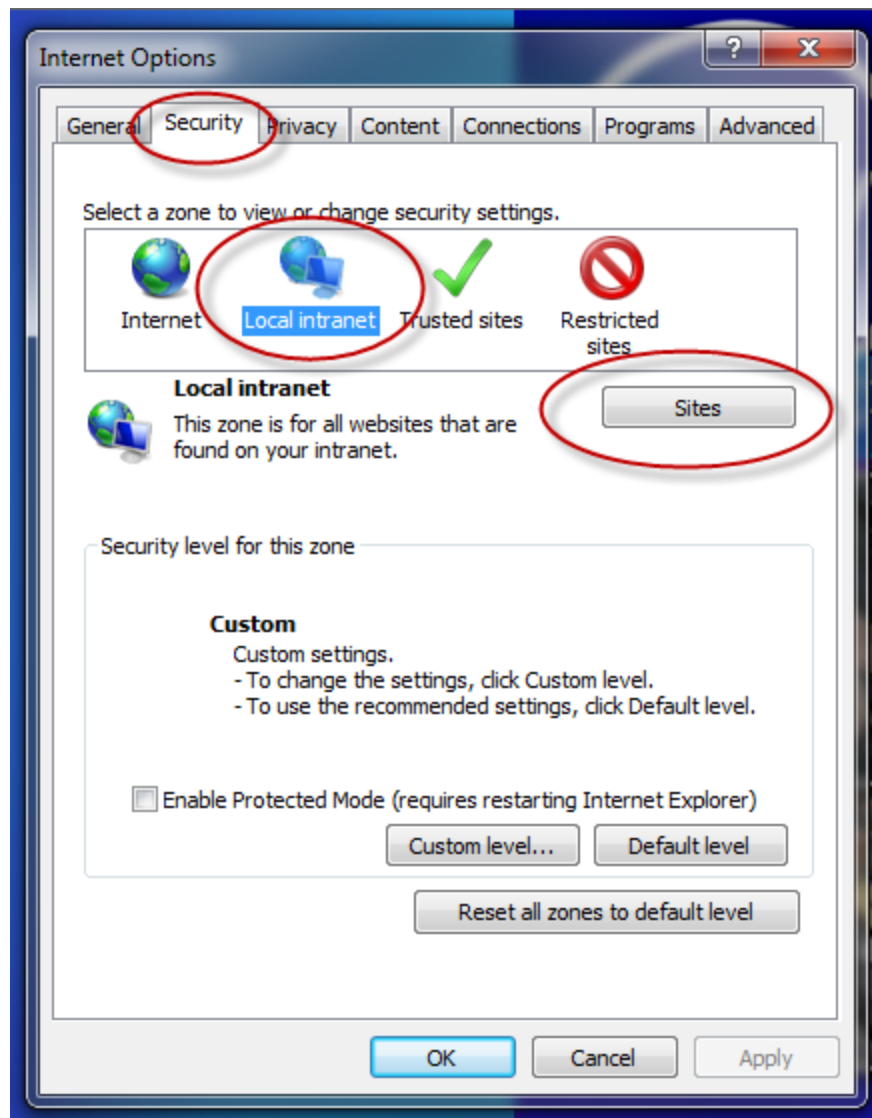
In Internet Explorer (You might have to hit the Alt key to see the menu), please go to the Tools -> Internet Options ->





The State University
of New York

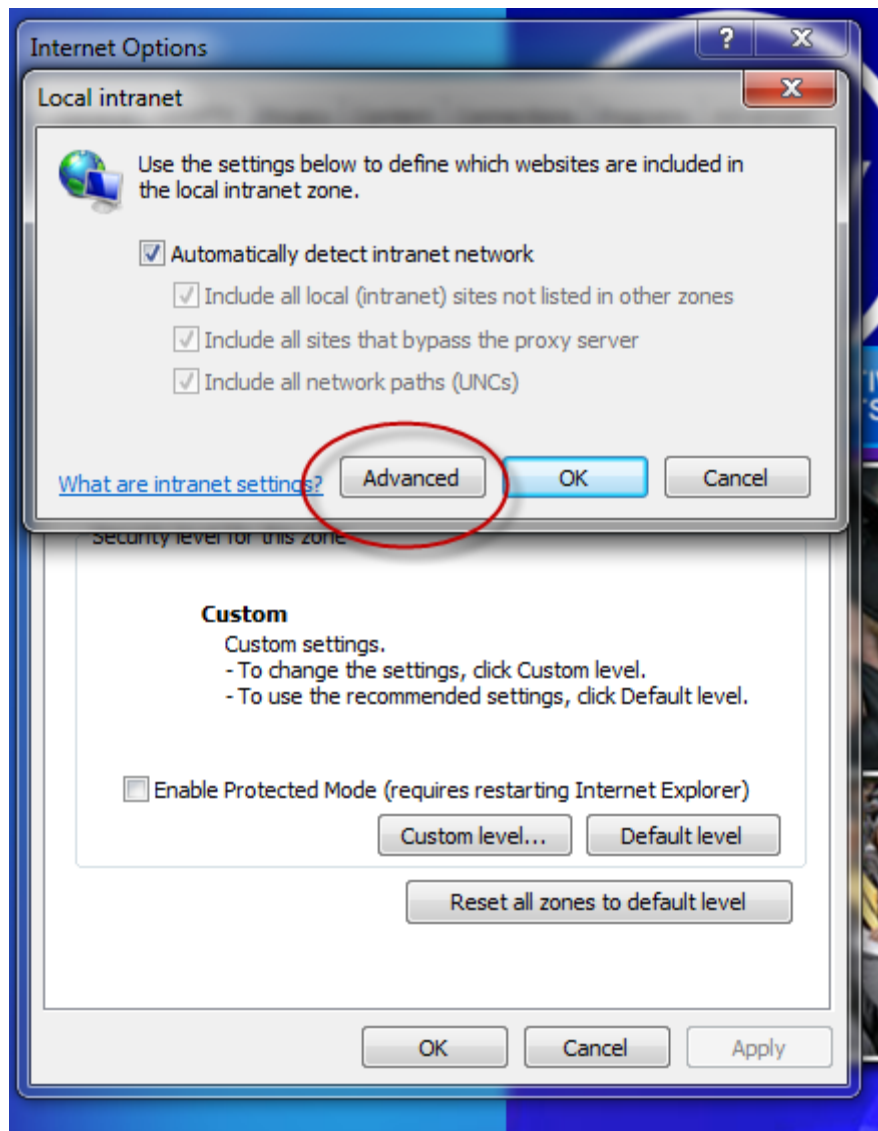
Security tab -> Local intranet -> Sites ->





The State University
of New York

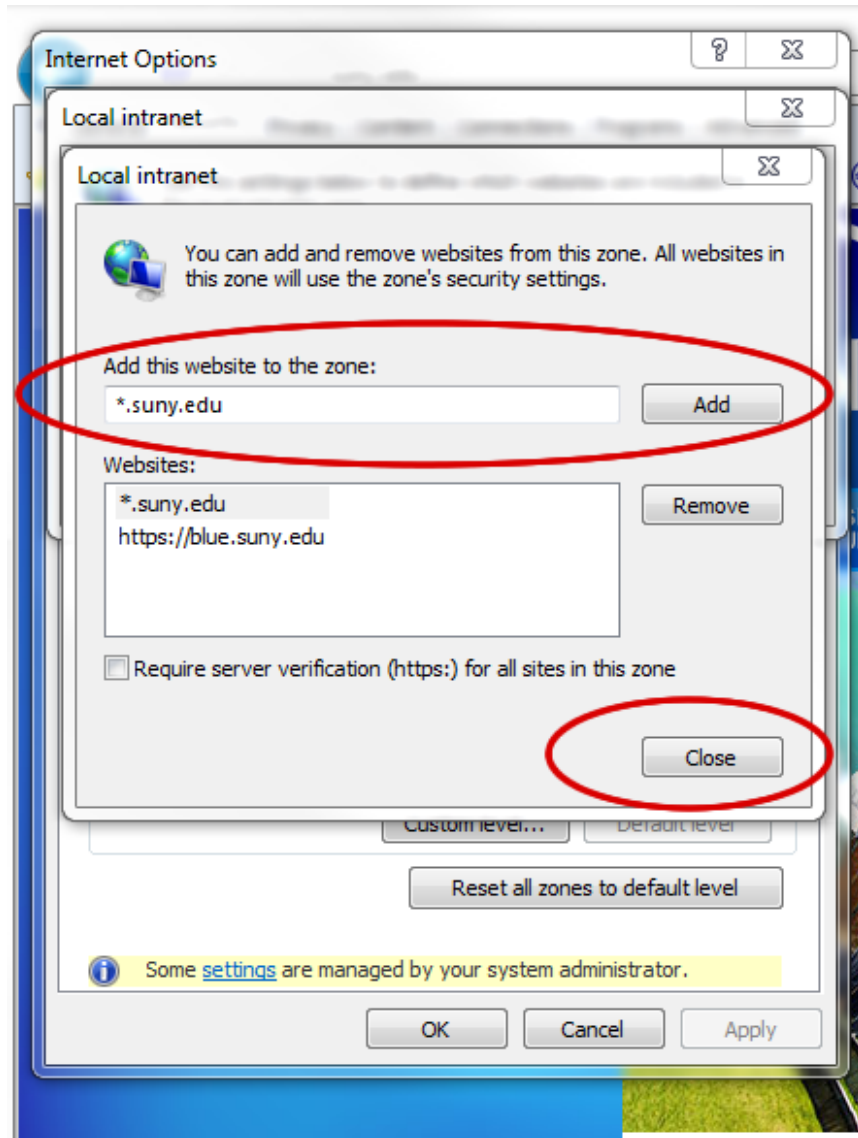
Advanced button





The State University
of New York

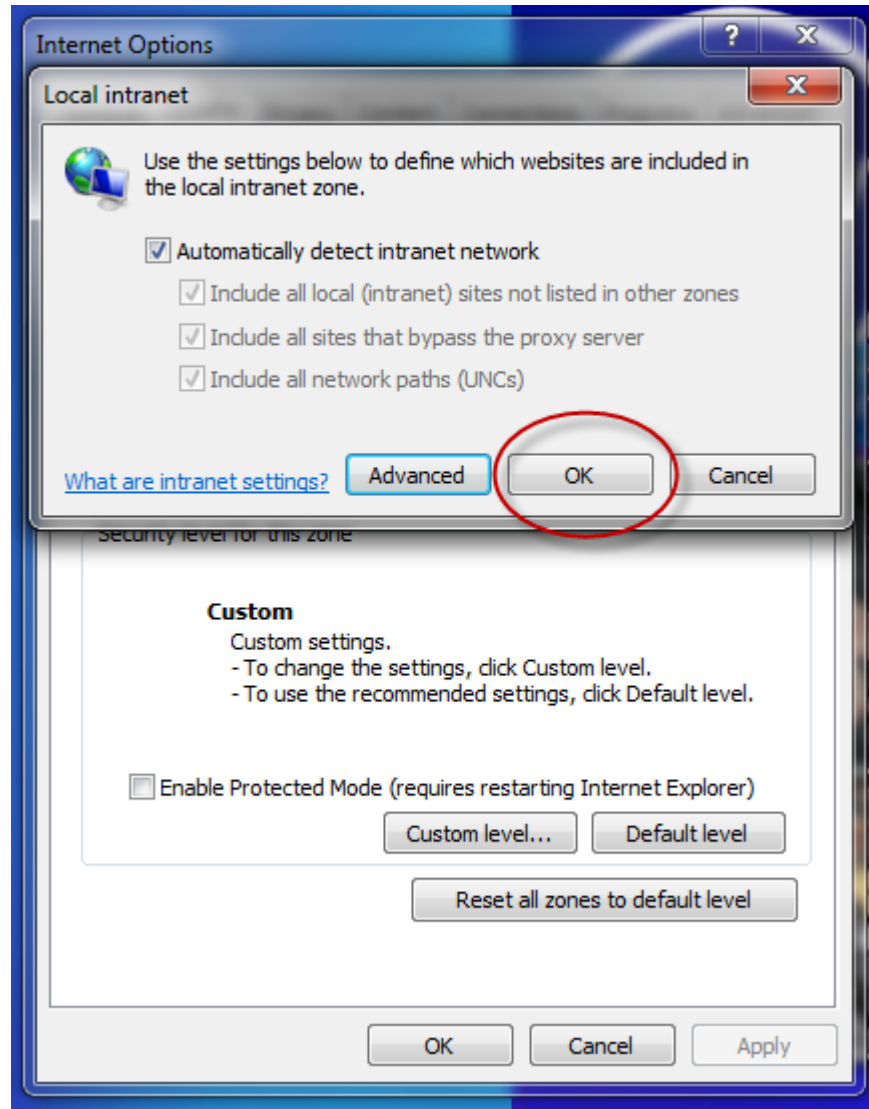
Enter in 'https://federation.sysadm.suny.edu' within the 'Add this website to the zone' field, choose 'Add', 'close'





The State University
of New York

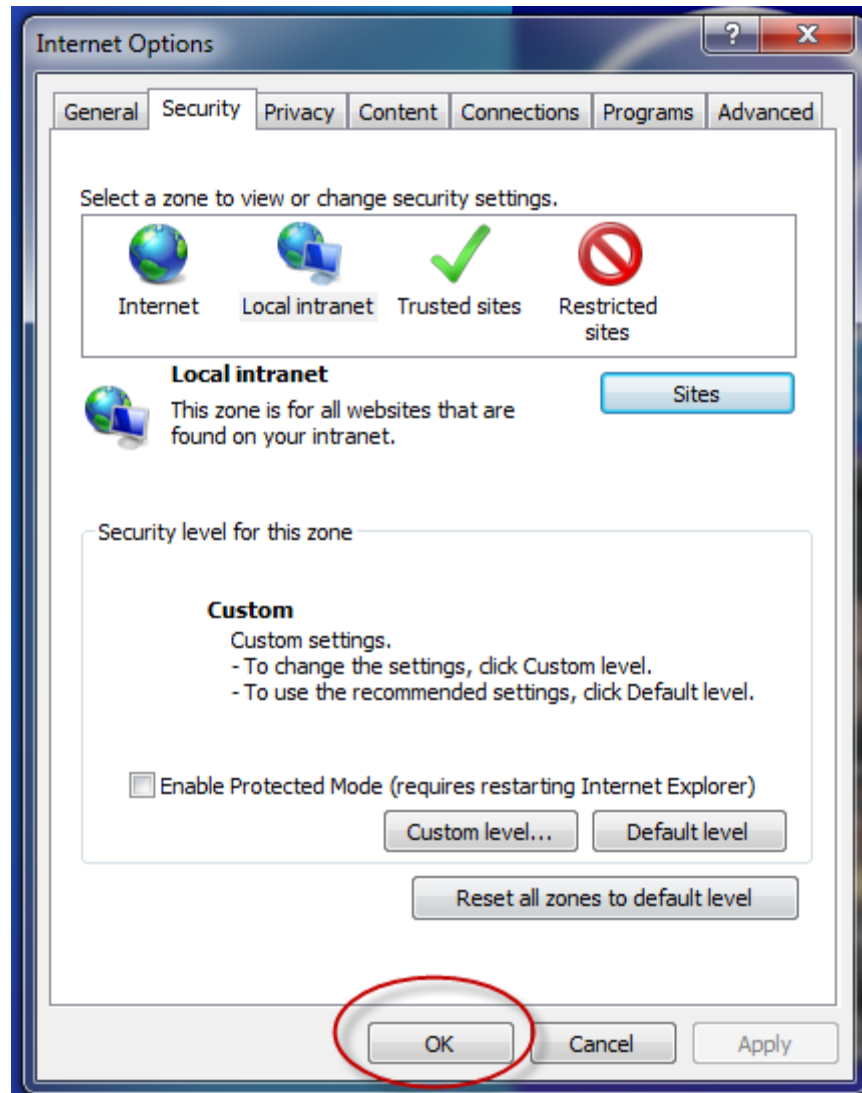
Choose 'OK'





The State University
of New York

Choose 'OK'.



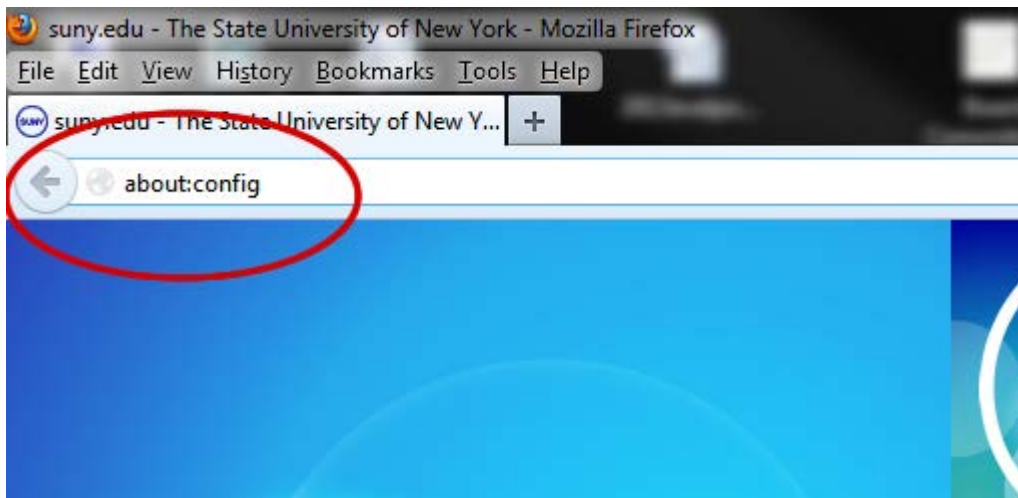


Mozilla Fire Fox

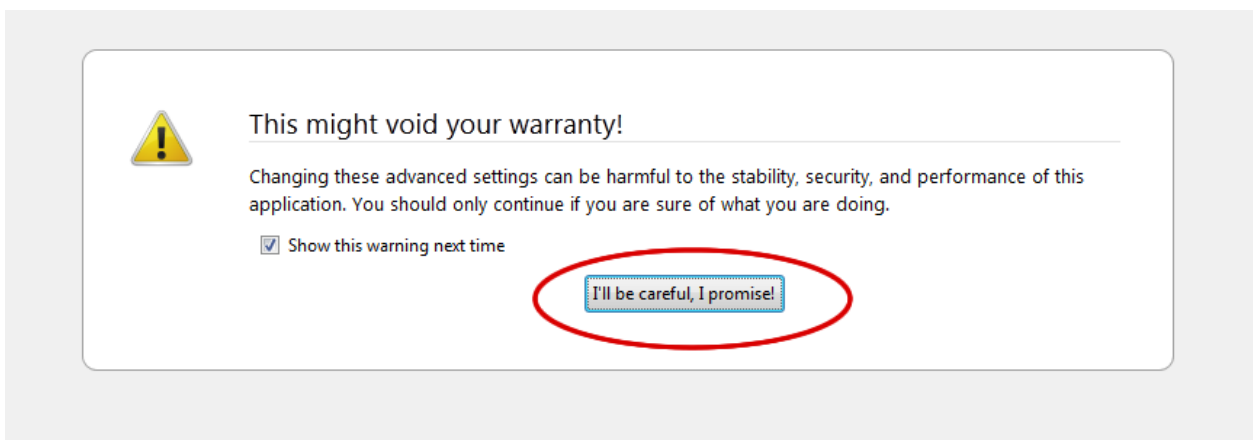
Enable Single Sign On (SSO)

To enable single sign-on in Firefox, you must authorize the SUNY SA Intranet site for automatic NTLM. To do this:

Open **Firefox** & Enter **about:config** in the address bar of Firefox and press **Enter**.



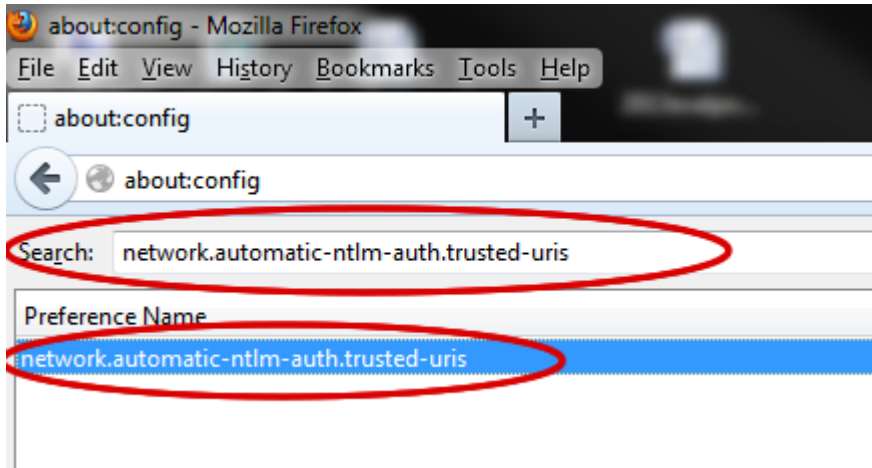
You may receive this warning; choose **I'll be careful, I promise**.





The State University
of New York

In the **Filter** textbox, enter `network.automatic-ntlm-auth.trusted-uris` and press **Enter**.
Double click on `network.automatic-ntlm-auth.trusted-uris` to edit it.



Enter '`https://blue.suny.edu`' and click **OK**.

