

Discover

THE STATE UNIVERSITY
OF NEW YORK

SUNY

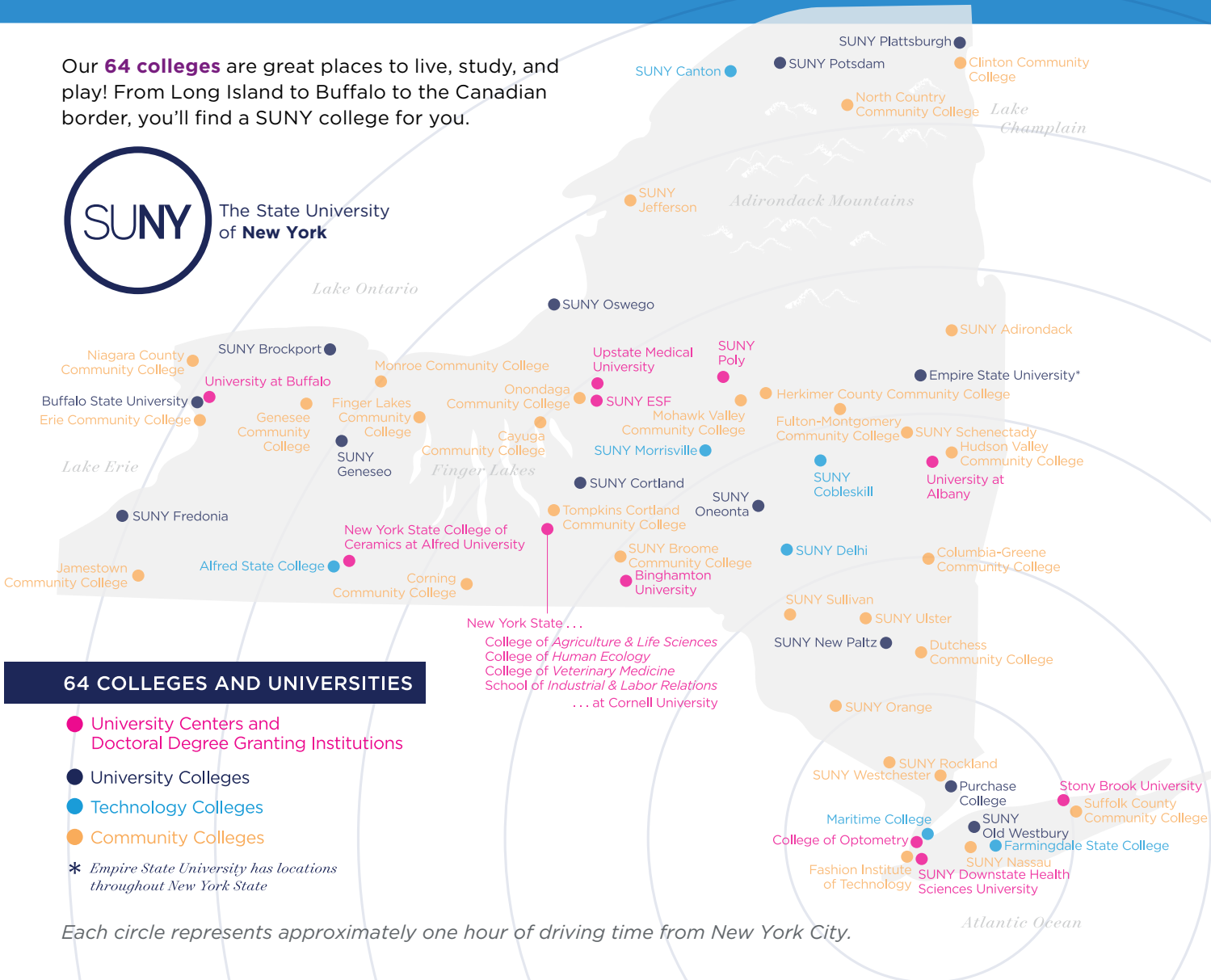
suny.edu/apply • 1.800.342.3811

EXPAND YOUR WORLD THROUGH SUNY

Our **64 colleges** are great places to live, study, and play! From Long Island to Buffalo to the Canadian border, you'll find a SUNY college for you.



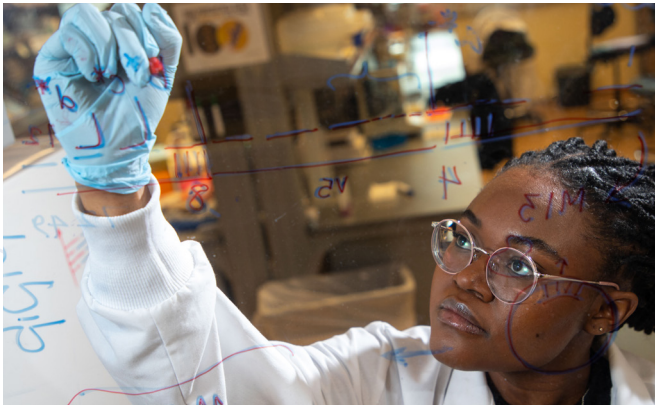
The State University of New York



64 COLLEGES AND UNIVERSITIES

- University Centers and Doctoral Degree Granting Institutions
- University Colleges
- Technology Colleges
- Community Colleges
- * Empire State University has locations throughout New York State

Each circle represents approximately one hour of driving time from New York City.



UNIVERSITY CENTERS AND DOCTORAL DEGREE GRANTING INSTITUTIONS

Top-ranked public research universities offering every level of study, where SUNY faculty and students drive world-leading innovation.



UNIVERSITY COLLEGES

Nationally recognized bachelor's and master's degrees from some of the northeast's top public regional universities, situated in small towns and cities across New York State.



TECHNOLOGY COLLEGES

Specialized colleges focused on hands-on training for in-demand careers, with surprising range of degree offerings.



COMMUNITY COLLEGES

Attuned to the needs of both students and employers in their region, community colleges offer a welcoming, supportive environment to launch a career or start on a 4-year degree.

GET THE FULL NEW YORK EXPERIENCE



THERE IS NO PLACE IN THE WORLD LIKE NEW YORK AND NO PLACE IN THE WORLD LIKE SUNY.

That's why we go so well together. So, step outside NYC, join our 64-campus community, and watch your world expand exponentially. SUNY will take you where you want to go.

VISIT A CAMPUS.

Visiting a campus is the best way to get a sense of whether it's right for you—meet the students, see the facilities, experience the community, and ask all your questions.

learn more at
suny.edu/visit



CHOOSE YOUR PATH.

Select from nearly 4,500 undergraduate degree and certificate programs, including high-demand programs responsive to the needs of New York State.

learn more at
suny.edu/majors



GET INVOLVED.

Create the kind of SUNY experience you desire—inside and outside the classroom. Whether you join a club, participate in an internship, or study abroad, you'll connect with others who share your passions.

learn more at
[suny.edu/
student-life](https://suny.edu/student-life)



STUDENT STORIES



NATASHA

Natasha is a criminal investigation major who has taken on many inspiring leadership roles. She is a Resident Assistant and a Student Ambassador for the Office of Admissions. She was also selected for the Presidential Internship with the Student Activities, Involvement, and Leadership Office. When reflecting on her accomplishments she said, "Don't underestimate yourself or your goals. When things are meant to be, everything will fall into place to create the best moments for you."

MATTHEW

Mechanical engineering major, Matthew, joined the First-Year Research Immersion Program which provides first-year students with the opportunity to spend three semesters working on cutting-edge research to tackle world issues. Through this program, he traveled to Denver, Colorado and presented his work to professionals across the country. He is also the Technical Project Manager for the Rover team which built a prototype rover that could survive on Mars and has participated in multiple competitions.



GABBY

Gabby was in search of a state-of-the-art culinary arts program and found one just minutes from home. Not only is Gabby learning to cook and bake, but she also takes classes like menu merchandising and marketing. Her hands-on experience comes from the internships she did at local mom and pop kitchens and corporate bakeries. After graduation, Gabby hopes to gain experience working in kitchens locally and abroad before opening up her own café.





BE A SMART INVESTOR

SUNY offers a network of shared resources to help you meet your goals. You can minimize the time it takes to earn your degree and then translate that degree into a successful career, all at a fair and reasonable cost.

2025-26 TYPICAL EXPENSES

UNDERGRADUATE NEW YORK STATE RESIDENTS AT A SUNY COLLEGE

Nine-Month Academic Year (Use these amounts as a guide to costs in 2026-27)

	State-Operated Campuses		Community Colleges	
	Living on Campus	Commuting	Living on Campus	Commuting
Direct Costs (Costs typically paid directly to the campus)				
Tuition	\$7,070	\$7,070	\$5,560	\$5,560
Student Fees	\$1,830	\$1,830	\$1,090	\$1,090
Housing & Food	\$16,790	\$5,140	\$12,620	\$5,430
Total Direct Costs	\$25,690	\$14,040	\$19,270	\$12,080
Indirect Costs (Costs not paid to the campus. Will vary based on personal choices)				
Books & Supplies	\$1,350	\$1,350	\$1,570	\$1,570
Personal Expenses	\$1,770	\$1,760	\$1,330	\$1,500
Transportation	\$1,080	\$1,860	\$1,490	\$2,060
Total Indirect Costs	\$4,200	\$4,970	\$4,390	\$5,130

HOW TO MEET EXPENSES

- > Get an estimate of your federal financial aid eligibility by completing the FAFSA4caster at fafsa.gov
- > Search for campus scholarships at suny.edu/scholarships
- > Get more information about paying for college at suny.edu/cost
- > Learn more about state scholarship programs at hesc.ny.gov

CALCULATE YOUR OWN ESTIMATED NET COST OF ATTENDANCE AT SUNY.EDU/HOWMUCH.

Arthur O. Eve Educational Opportunity Program

EOP has created opportunities for promising students to overcome financial and academic barriers, enroll in college, and thrive. EOP students receive financial support for housing and supplies, personalized tutoring, counseling, paid leadership opportunities, a pre-freshman summer program, and a lifelong supportive network.

2026-27 EOP INCOME ELIGIBILITY CRITERIA

Household Size	Eligible Income
1	\$28,953
2	\$39,128
3	\$49,303
4	\$59,478
5	\$69,653
6	\$79,828
7	\$90,003
8	\$100,178*

**For families/households with more than 8 persons, add \$10,175 for each additional person.*

WHO SHOULD APPLY FOR EOP?

Students who fall slightly below the academic criteria for general admission and qualify as economically disadvantaged according to income guidelines set by the NYS Education Department.



See detailed EOP eligibility guidelines at suny.edu/eop



ASAP|ACE at SUNY

Focused on student success, ASAP|ACE is available at multiple SUNY campuses across the state and helps students in both two- and four-year degree programs stay on track and graduate on time through academic, financial, and personal support.

WHO SHOULD CONSIDER ASAP|ACE?

Students who enroll full-time in an ASAP|ACE approved major, who are U.S. citizens or eligible noncitizens qualifying for in-state tuition, and receiving at least \$1 of Pell.

ASAP|ACE STUDENTS RECEIVE:

- ✓ Dedicated personalized advising
- ✓ Career development guidance
- ✓ Financial support
- ✓ Consolidated course schedules
- ✓ A close-knit community of fellow learners

Learn more at suny.edu/asap-ace



SUNY's Welcome Center in New York City is the regional office for all 64 campuses within The State University of New York.

We're Here to Help!

Explore. We can help you select from the nearly 4,500 programs of study that are offered at our 64 unique campuses.

Apply. Receive one-on-one SUNY application assistance.

Navigate. Schedule a personal counseling appointment to discuss your financial aid options.

Attend. Visit suny.edu/studentevents to register for an information session.

Contact Us to Make an Appointment

Call: 212.364.5821

Email: SUNYinNYC@suny.edu
(Monday through Friday, 8:30 a.m. – 4:30 p.m.)

Hablamos español!

suny.edu/attend/suny-in-nyc

The State University of New York
SUNY Global Center
116 E 55TH Street, New York, NY 10022

STAY CONNECTED



@stateuofnewyork



The State University of New York - SUNY



The State University of New York - SUNY



@SUNY



The State University of New York - SUNY



@SUNY

BE SUPPORTED