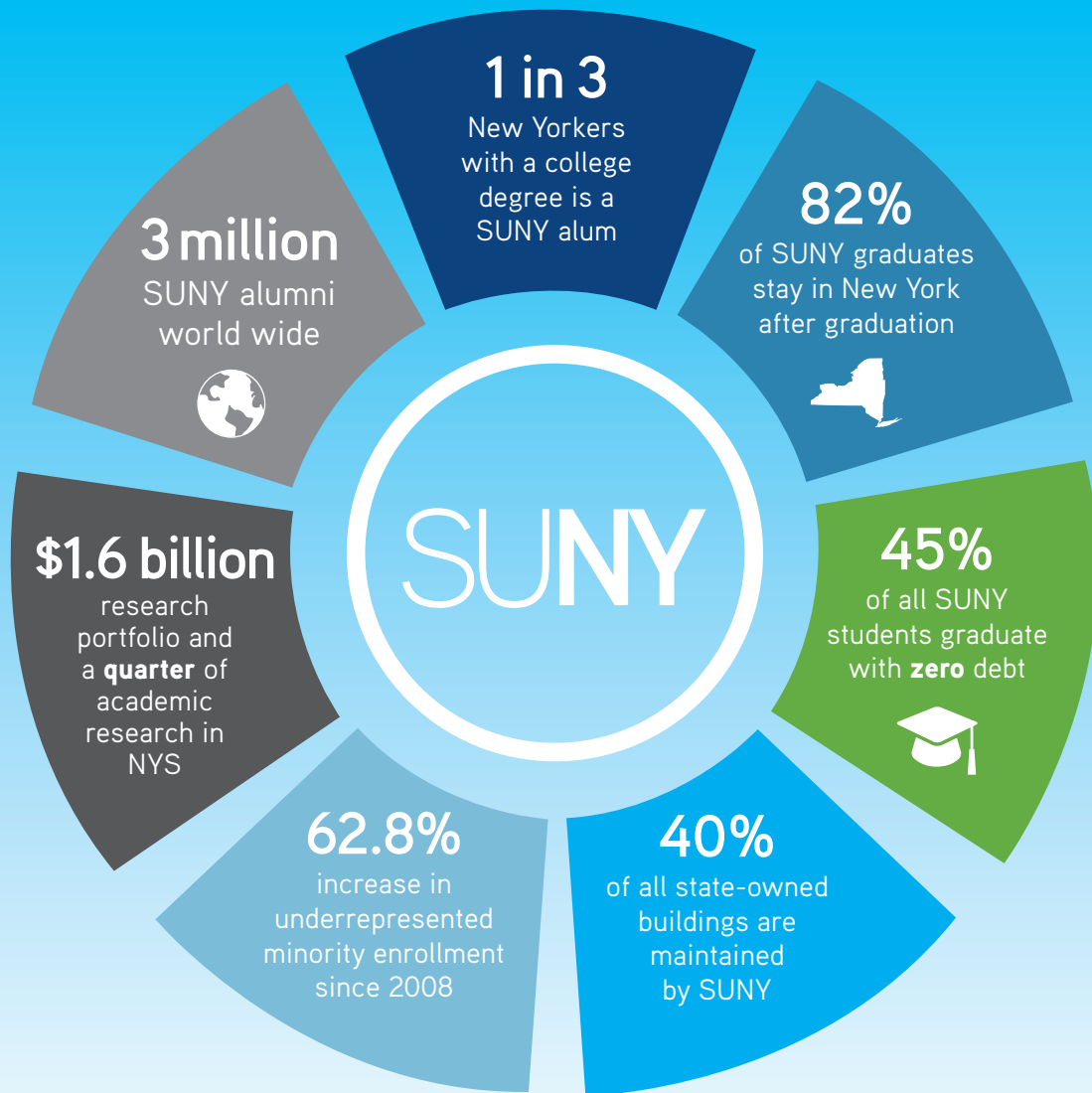


SUNY is the nation's largest comprehensive system of higher education comprised of community colleges, bachelors degree granting colleges, graduate and doctoral research centers, medical schools, hospitals, a law school, and a national lab.



THE ECONOMIC IMPACT OF SUNY*



\$28.6B
IN NYS ANNUALLY,
2015-16
(1.9% of gross state product)



\$8.17
RETURN ON
INVESTMENT
for every \$1 of
state funding



179,400
DIRECT AND INDIRECT
JOBS ANNUALLY
(1.5% of the NYS workforce)



1,781,000
SUNY GRADUATES
PARTICIPATING IN THE
NYS WORKFORCE

*Rockefeller Institute of Government 2018 economic impact report



To Learn, To Search, To Serve

SUNY FAST FACTS

ENROLLMENT	64 COLLEGES & UNIVERSITIES	
	Fall 2019 Enrollment	415,572
	Undergraduate Enrollment	372,948
	Graduate Enrollment	42,624
	State Operated Enrollment	222,613
Community College Enrollment	192,959	

COMPLETION RATES	BACHELOR'S DEGREES (Fall 2012 Cohort as of Fall 2018)	
	SUNY 6-Year Graduation Rate	69.3%
	National Public Universities	61.0%
	ASSOCIATE DEGREES (Fall 2015 Cohort as of Fall 2018)	
	SUNY 3-year Graduation Rate	28.6%
National Public Universities	25.7%	

DEGREES	2018-19 DEGREES AWARDED	
	92,670	
	Undergraduate Certificates	2,335
	Associate Degrees	32,354
	Bachelor's Degrees	42,882
	Master's Degrees	11,050
	Doctoral Degrees	1,247
	First Professional Degrees	1,528
Graduate Certificates	1,274	

STUDENT DIVERSITY	White	56.0%
	(Includes Non-underrepresented Multi-racial)	
	Hispanic/Latinx	13.8%
	Black or African American	10.9%
	Asian	6.8%
	Native American/Alaska Native	0.4%
	Native Hawaiian/Other Pacific	0.1%
	Unknown	5.0%
	Other	2.0%
	(Underrepresented Multi-racial/ethnic)	

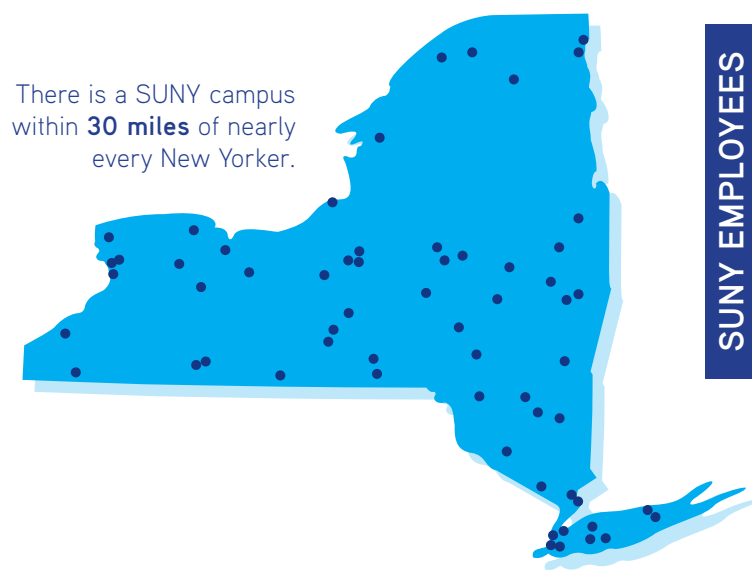
INTERNATIONAL	20,821	
	State Operated	18,214 (8.3% of State-Operated Students)
	Community Colleges	2,607 (1.3% of Community College Students)

OUT-OF-STATE	16,856	
	State Operated	12,275 (5.5% of State-Operated Students)
	Community Colleges	4,581 (2.4% of Community College Students)

STUDENTS FROM NEW YORK CITY	46,832
------------------------------------	---------------



32% Increase Since 2008



SUNY EMPLOYEES	SUNY EMPLOYEES	
	91,961	
	Faculty	32,721
	State Operated	19,722
	Community Colleges	12,999
	Non-Faculty	58,660
	State Operated	46,603
Community Colleges	12,057	
System Administration	580	