

SUNY System Administration Pandemic Flu Symposium

Saratoga Springs, NY
November 8, 2006

Developing a Campus Plan



Lisa A. Donohue, CIH, CSP, CHO
Assistant Director of Environmental Health & Safety
University at Albany, SUNY

P	Plandemic, n.	A cartoon illustration featuring three characters: a woman with blonde hair, a man with a mustache, and a dog. The woman says, "OH MY GOODNESS WE COULD ALL DIE!". The man replies, "WE NEED TO WRITE AN ACTION PLAN WITH TRIPLE REDUNDANCY CONTINGENCY MEASURES.". The dog thinks, "WHAT TO HAVE FOR LUNCH??". The cartoon is signed "A. MURK" in the bottom right corner.
<p>An uncontrolled outbreak of planning triggered by identification of plausible new ways to die.</p> <p>Main symptoms: desire to hold press-conferences, followed by either mass inoculation or compulsive stockpiling.</p>		<p><i>The best way to avoid being embroiled in a plandemic is to stand aside and graciously permit more worried people to do the work.</i></p>



SCHOOL OF PUBLIC HEALTH
UNIVERSITY AT ALBANY, State University of New York

Center for Public Health Preparedness

The mission of the University at Albany Center for Public Health Preparedness is to improve the capacity of the public health workforce in the states of New York and Vermont to respond to current and emerging public health threats with a focus on bioterrorism and infectious disease outbreaks.

History of University at Albany Pandemic Influenza Planning Committee



- **School of Public Health - Center for Public Health Preparedness (CPHP) - 12/05**
- **UAlbany Emergency Management Team - 6/06**
- **College/University Flu Planning Meeting (CPHP and Albany, Rensselaer, and Schenectady County DOH) - 7/06**
- **Albany County DOH - 8/06**
- **SUNY System Administration - 8/06**

University at Albany Pandemic Influenza Planning Committee

Finance & Business

Kathryn K Lowery, VP for Finance and Business
Steve Beditz, Assoc. VP, Human Resources
Julia M Filippone, Ass't VP, Exec. Director UAS
Karen J Kettlewell, Ass't Exec. Director UAS
Vincent T Franconere, Director of EH&S
Lisa A Donohue, Ass't. Director of EH&S
Edward R Kane Jr., Director of Institutional Services
DawnMarie Helin, Ass't Director of Institutional Services
Michelle McConville, Ass't. Director of Physical Plant

Academic Affairs

Melinda Spencer, Vice Provost for Admin. & Planning
Sue R Faerman, Dean, Undergraduate Studies
Marjorie Pryse, Dean, Graduate Studies
Jonathan Bartow, Ass't Dean, Graduate Studies
Margaret J Reich, Director International Student Services
Robert G Westphal, M.D., Dir. Center for PH Preparedness

University Counsel

John H Reilly, Associate University Counsel

Student Success

Christine Bouchard, Assoc. VP for Student Success
John M Murphy, Assoc. VP for Student Success
Cynthia Brady, Director of Operations
Laurie M Garafola, Director of Residential Life
Carol A Perrin, Assoc. Director of Residential Life
Holly D Van Allen, Ass't. Director of Residential Life
Peter Vellis, D.O., University Medical Director
Rebecca Kobos, M.D., Staff Physician
Margarita Farley, M.D., Staff Physician
Estela Rivero, Director University Counseling Ctr.
J. Frank Wiley, Chief, University Police
Thomas J Kilcullen, Deputy Chief, University Police

Office of the Chief Information Officer (ITS)

Katarina B Holbrook, Mgr. Software Management & Compliance

Governmental, Public & Media Relations

Karl Luntta, Director of Media Relations

Dining Services

Ralph D Lembo, Reg. Dist. Mgr., Chartwells

Neil Volk, Student

GOAL OF COMMITTEE

- **To put together an emergency management plan for a pandemic influenza event that integrates with our Campus Emergency Plan**

Some of the Primary Resources UAlbany is Using

- **American College Health Association (ACHA)**
ACHA Guidelines for Pandemic Planning
- **Arthur J. Gallagher Risk Management Services, Inc.**
Blueprint for Pandemic Flu Preparedness Planning for Colleges and Universities
- **Carnegie Mellon University**
- **Campus Safety Health and Environmental Management Association**
<http://www.cshema.org/resource/pandemic0306.htm>
- **University of North Carolina at Chapel Hill**
- **University of California, Davis**
- **SUNY System Administration**
Draft SUNY Pandemic Influenza Planning & Preparedness Workplan

University of North Carolina at Chapel Hill

- **UNC Pandemic Influenza Response Plan – Incident level Responsibilities**
- **Matrix Plan**
- **Fit in well with our Campus Emergency Plan**
- **Changed titles to fit our organizational structure**
- **Asked each committee member to start building in the matrix under their operational area**
- **SUNY System Administration adopted the same template**

What Has Worked Well For UAlbany

- **KEY PERSONNEL:**
- **VP for Finance and Business**
- **Director of Environmental Health and Safety**
- **Director of the Center for Public Health Preparedness**
- **University Medical Director**

What Has Worked Well For UAlbany

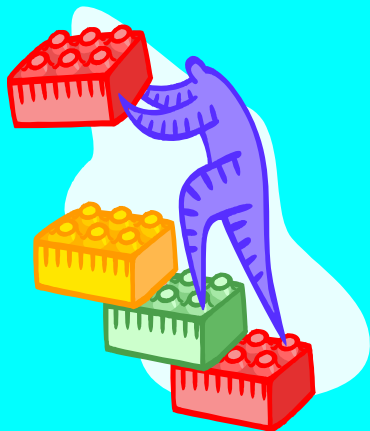
KEY GROUPS:

- **Finance and Business – includes VP's Office, Human Resources, University Auxiliary Services, Institutional Services, Physical Plant, and Environmental Health and Safety**
- **Academic Affairs – includes Provost and VP's Office, Undergraduate and Graduate Studies, International Student Services, and Center for Public Health Preparedness**
- **Student Success – includes VP's Office, Residential Life, Operations, University Medical Center, University Counseling Center, and University Police Department**
- **University Counsel**
- **Informational Technology Services**
- **Governmental, Public & Media Relations**
- **Dining Services**
- **Plus Invited Guests - Parking and Mass Transit Services**

What Has Worked Well For UAlbany

- **Composition of Committee**
- **Meet Regularly – Every Two Weeks**
- **Don't Reinvent the Wheel – Work Wheel into Your Plan**
- **Spread Responsibility to the Appropriate Entities**
- **Work with Local and State Agencies**
- **Must Make Some Assumptions –**
 - “Assume an influenza attack rate of 35% on staff”
 - “Assume all faculty/staff/students have access to Internet and UA e-mail services”

STUMBLING BLOCKS



- **POLICY FORMATION**
- **When do you close?**
- **Who can make the decision to close the University?**
- **What are the trigger points?**
- **Who are the essential personnel?**
- **What do you do for tuition reimbursement?**
- **How do you handle the credit issue?**
- **What respirators do you provide N95s or surgical masks?**
- **What do you do with students that can't get home?**

PHILOSOPHY OF PLANNING COMMITTEE

- **“Act sooner than later”**
- **Given what we know about pandemics, things will happen quickly**
- **We want every opportunity to get our students home, in order to reduce the number of potentially sick students on campus.**
- **Preplan and Act – Lessons from Katrina**

ANY QUESTIONS?



THANK YOU!