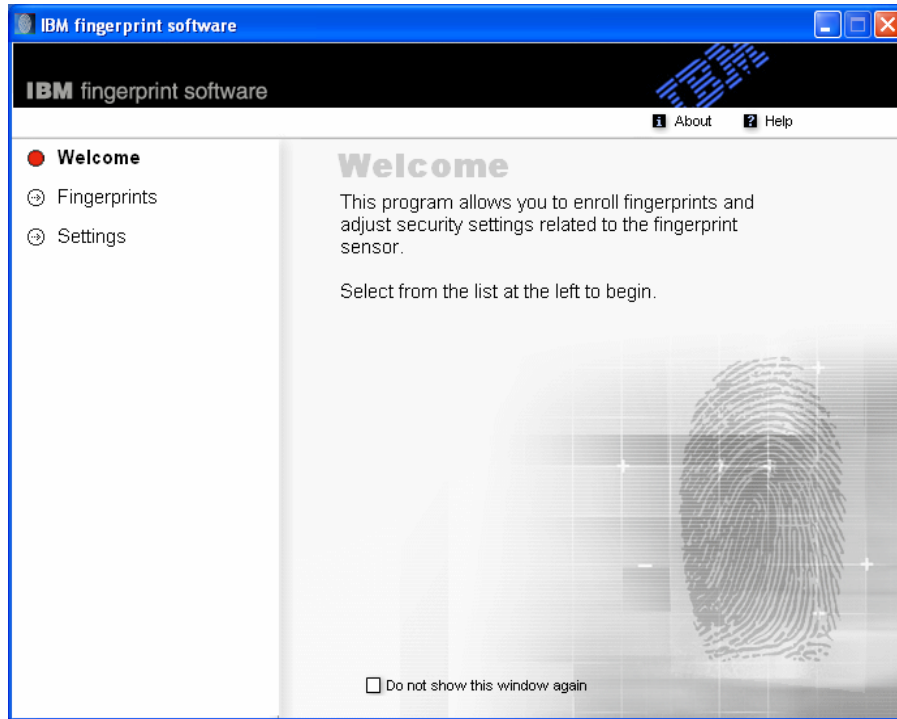


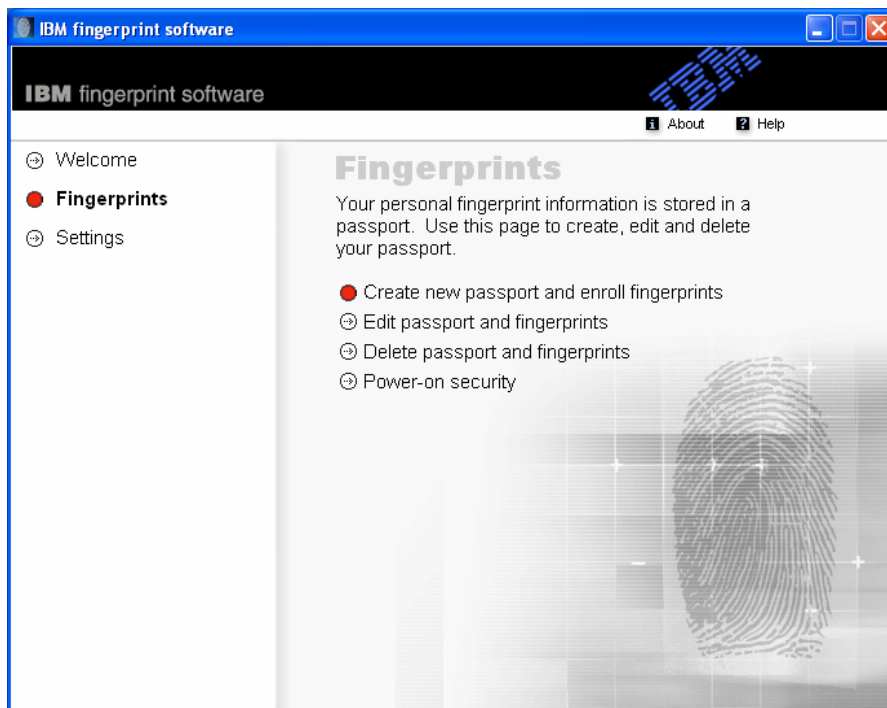


Setup IBM Finger Print Security

1. Click Fingerprints.



2. Click Create new passport and enroll fingerprints.





3. Type in your user name and click Next.

Edit Passport

User Enrollment

User identity
Enter your Windows User password below:

Username:

Password:

Domain:

Save windows password

< Back Next > Help Cancel

4. Choose the finger you wish to scan and click Next.

User Enrollment

User Enrollment

Select the finger you would like to enroll. It is recommended that you enroll at least two fingers. Fingers with a red dot are already enrolled. Select an enrolled finger to delete it.

Please enroll at least one of your fingers:

right index finger Enroll

< Back Next > Help Cancel



5. Scan your finger 3 times and follow the prompts to Add your fingerprint profile. Once done, the next time you start Windows you can swipe your finger and it will automatically log you in.

