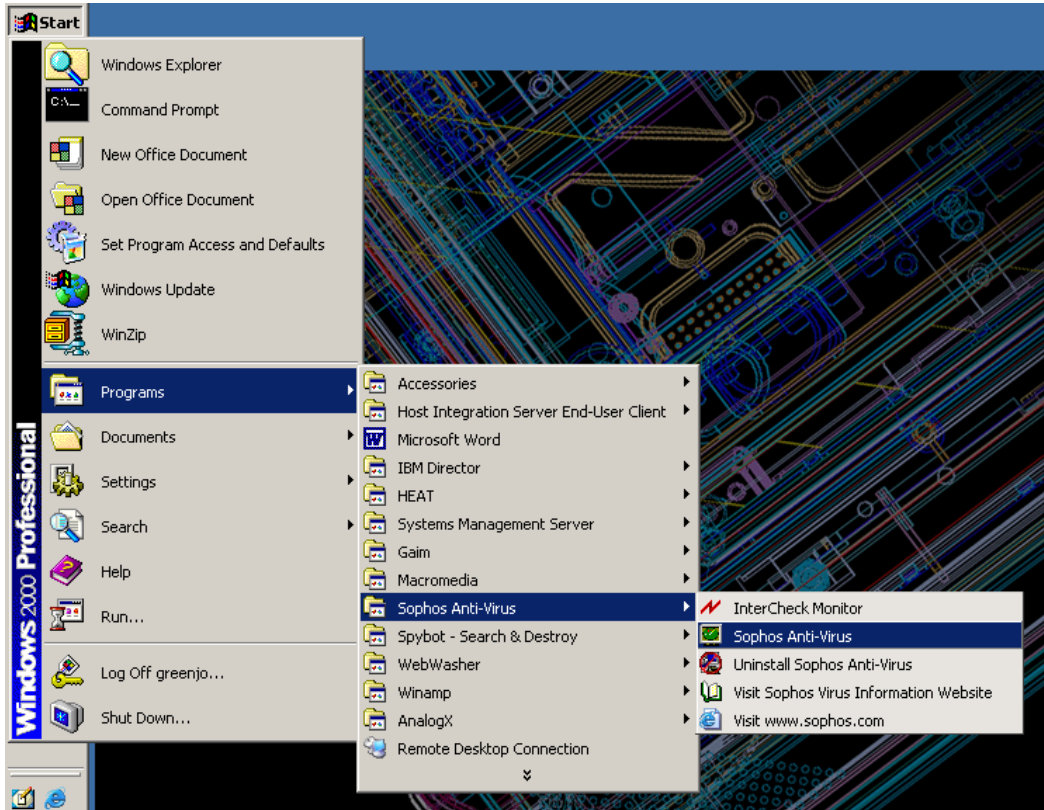


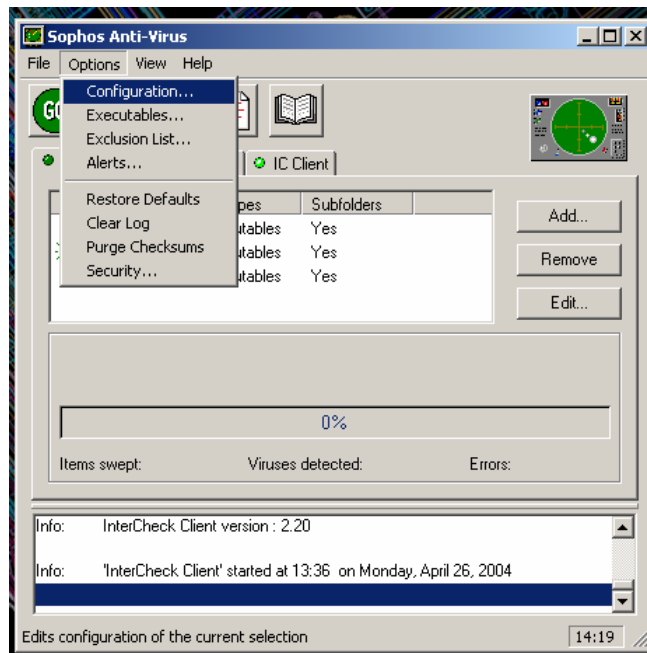


# Running Sophos Anti-Virus

1. Go to Start | Programs | Sophos Anti-Virus | Sophos Anti-Virus.

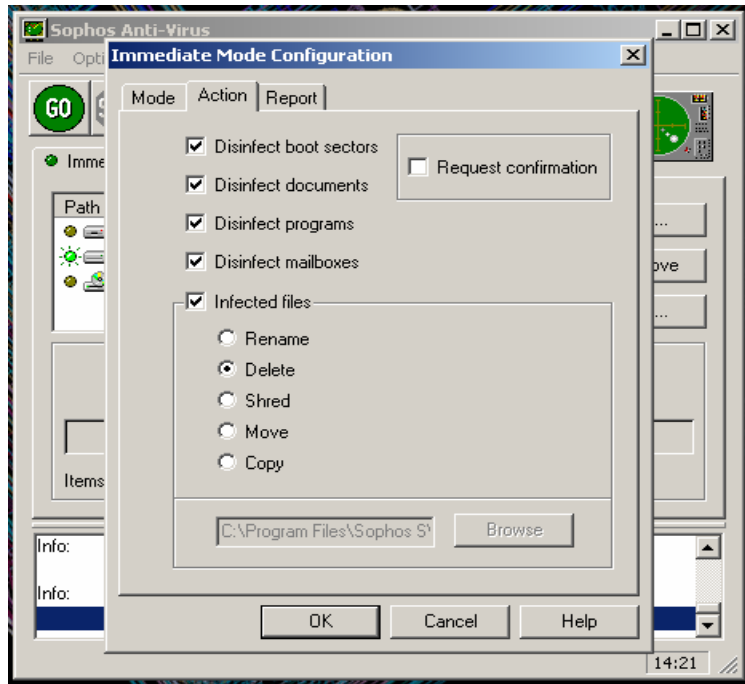


2. Select Options, then Configuration.





- Under the Configuration Menu, select the Action tab. Make sure that the 5 boxes on the left side all are checked. Under infected files make sure delete is selected. Uncheck the box to request confirmation. Then click OK at the bottom of the screen.



- Click on Local hard-drives in the center of the screen then click the large green GO button to start the scanning. The go button will be grayed out until scanning has completed.

